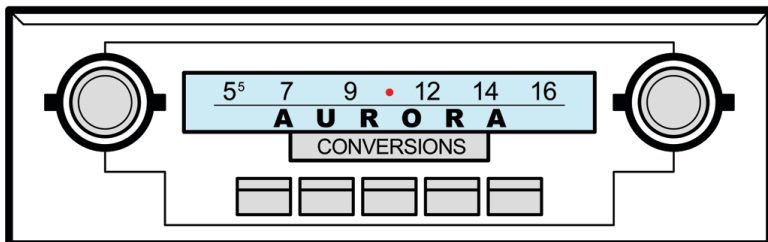


# Aurora Design FMR Configuration Tool



# *FMR*

## Operation Manual

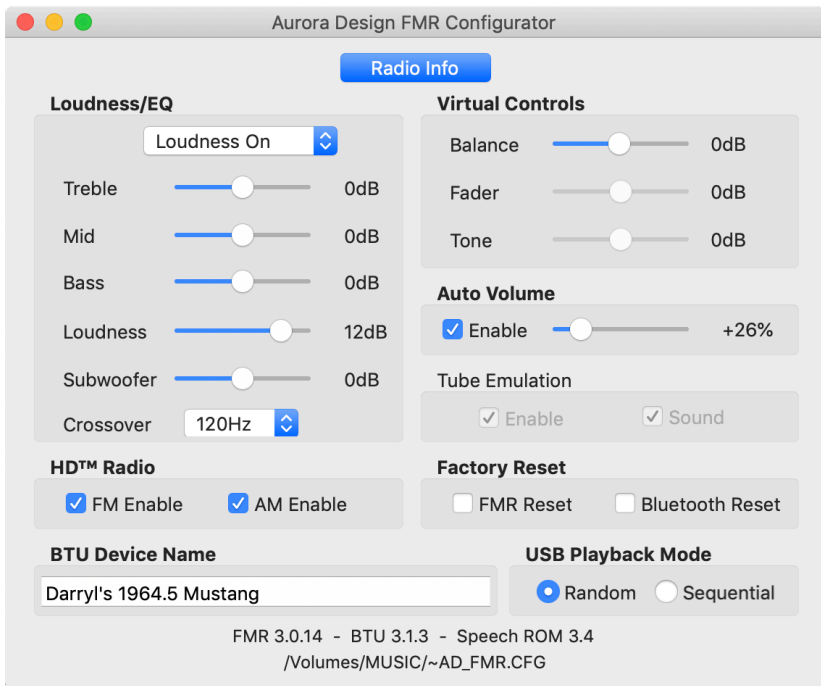
The FMR Configurator tool, available for Macintosh™, Windows™ and Linux computers, provides a means to adjust basic and advanced settings on a FMR-3.x radio using a graphical interface. On any FMR-3.x radio equipped with a BTU-3.x or USB-3.x, changes are made to a configuration file on a USB thumb drive and sent to the radio.

## Operation:

Along with the standard USB housekeeping files (~AD\_USBx.TXT) the BTU-3.x and USB-3.x already write to the USB thumb drive, each time a drive is attached, or the radio is turned on with a drive attached, the current configuration of the radio is now written to the ~AD\_FMR.CFG file.

## Basic panel:

Launching the FMR Configurator tool will either open the last .CFG used if it can be found or present the user with a standard *Open File* dialog. Select the desired .CFG file and the Basic settings panel will be displayed.



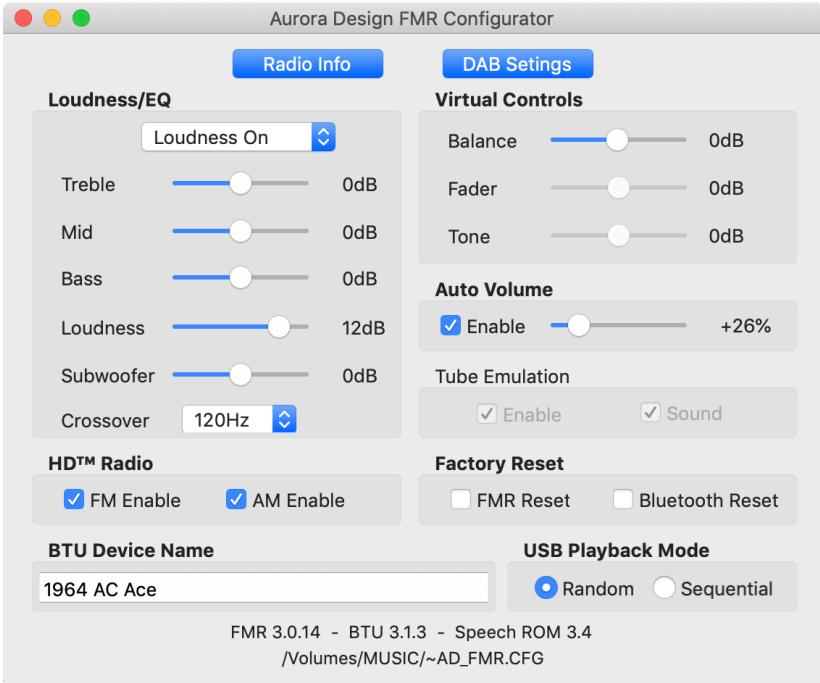
On this panel you can make basic adjustments to the radio settings. Note, not every adjustment will be available based on the installed options in the radio. When all adjustments are completed, the changes should be saved back to the USB thumb drive. This can be done by either selecting the *Save* item under the *File* menu, or just quitting the application which will alert you if any changes have not been saved. The App will write a ~AD\_FMR.SET file back to the drive. When the drive is reattached to the radio, the changes will be uploaded and a confirming message will be heard.

At the bottom of this panel the versions of all installed modules on the radio will be shown along with the path to the .CFG file.

Note: Drag and Drop is supported for the app. The .CFG file can be dragged onto the application icon to launch the app. Additionally .CFG files can be dragged onto any of the panels and they will automatically be updated.

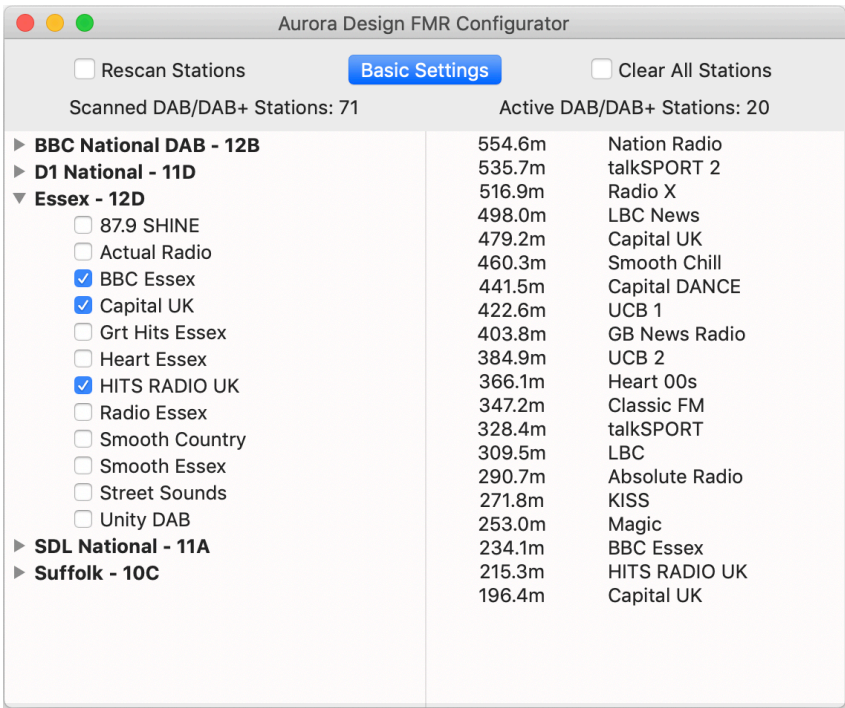
## DAB/DAB+ panel:

On FMR-3.x radios with DAB/DAB+ capability, the FMR Configurator tool provides an easy way to view and select the active stations list. On these radios, a *DAB Settings* button will appear at the top of the panel as shown below:



Pressing this button will go to the DAB/DAB+ settings panel. On the left side of the panel a list of *Ensembles* and their channel assignments that were found during the *Scan* will be shown. Each one can be expanded to reveal all the found *Services* for the *Ensemble*. By double clicking on any object on this side of the panel the sort order of the displayed Stations can be toggled between alphabetical and the order they were found during the Scan. Each *Station* can be selected or deselected to be presented on the radio dial.

The right side of the panel displays the Actively selected Stations and their positions on the original MW radio dial for reference. Up to 50 stations can be selected. By double clicking on any object on this side of the panel the display will toggle between wavelength and frequency, whichever matches the original dial scale on the radio.



On radios equipped with the latest firmware\*, the stations on the right side can be dragged to the desired order they will be presented on the radio dial. (Hint: the tool tip will say the stations can be dragged if the radio supports this feature)

There are also checkboxes for *Clearing All Stations* which is useful for starting from scratch or when moving to a different region, and to *Rescan* for DAB stations. To do a complete new setup for DAB, both checkboxes can be selected and then the desired stations selected.

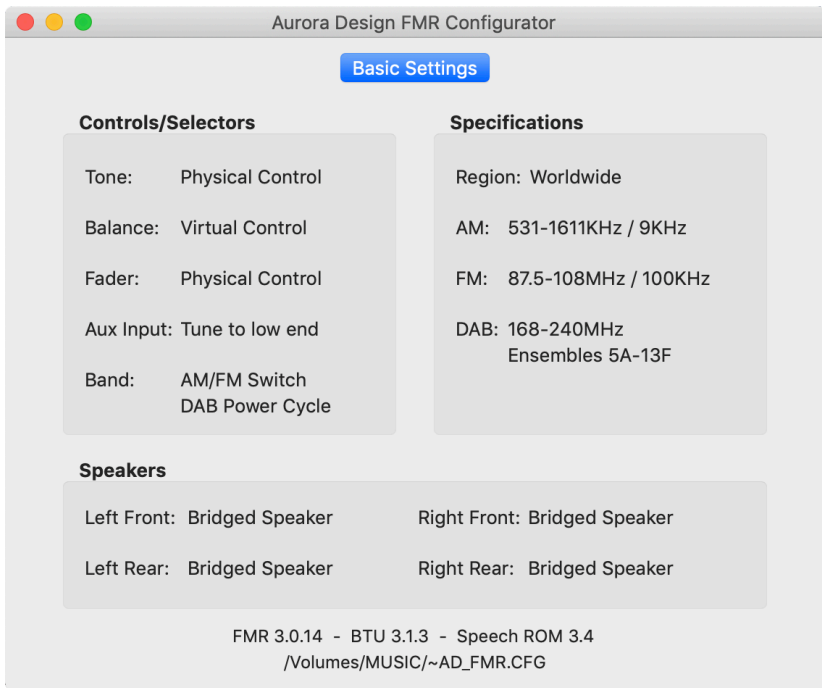
Note: This panel will display a scroll bar on either side if the list exceeds the panel height. The panel can also be expanded vertically by grabbing the bottom edge and dragging.

Note: The App will automatically save any changes you make such as position on the screen, size of the DAB panel, expanded Ensembles, etc. and restore them on the next launch.

### ***Radio Info panel:***

From the *Basic Settings* panel, selecting the *Radio Info* button will display the features and configuration of the radio for reference. Some information is static, displaying how the radio was configured during construction, like the *Region*, while others are dynamic and show the current configuration of the radio, like the *Speakers*.

Typical Radio Information panel for a DAB radio is shown below:



## ***Printing/Exporting:***

Any panel can be Printed using the computers standard printing dialog or Exported to a .png file.

## ***Troubleshooting:***

On early DAB/DAB+ radios, the actual Ensemble/*Service* names will not be shown. Generic names will be used. The radio can be upgraded with this functionality. Contact your original dealer for more information.

If an error is announced by the radio when updating the settings, try making the desired settings again or delete the ~AD\_FMR.CFG file and try again.

## ***Minimum System Requirements:***

macOS - 10.14(Mojave) - 14 (Sonoma)

Windows - 8.1 - 11

Linux - Mint 16, CentOS 7.0, Ubuntu 14.04 LTS, Debian 6.0,  
OpenSUSE 11.3 Fedora 13 Desktop  
(any above listed Linux or later)

\*Minimum firmware for reordering DAB stations feature:

FMR 3.0.20 BTU Smart 3.2.2 BTU 3.1.8 USB 3.0.10

Aurora Design LLC. ©2013-24 Rev 1.3.0 4/24

[www.tech-retro.com](http://www.tech-retro.com)